

MINISTRY OF PUBLIC WORKS

MARITIME ADMINISTRATION DEPARTMENT

NOTICE TO MARINERS

No. 111 (2025) Guyana

APPROACHES TO DEMERARA RIVER

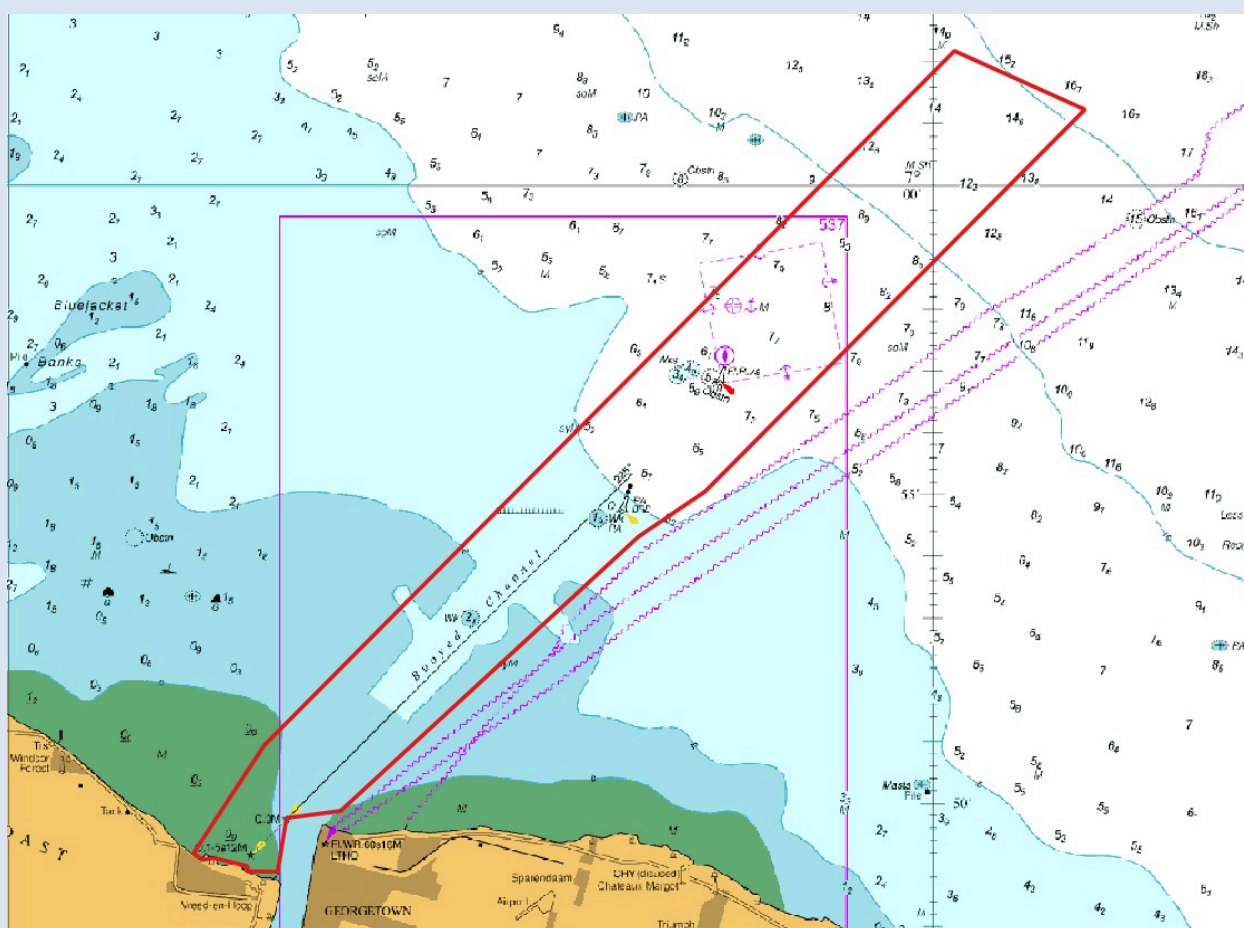
The Maritime Administration Department (MARAD) wishes to advise that dredging activities will continue in the vicinity of the Demerara Main Ship Channel and off the West Coast of Demerara in the vicinity of **Plantation Best**.

This exercise is scheduled to conclude on **December 31, 2025** and will incorporate the use of the undermentioned vessels, which will display the international signal for vessels engaged in such activities:

- **AHT DN87**
- **Deck Cargo Barge K4512**
- **Special Service Workboat Telesto**

The dredging area covers an area of 34.74 square nautical miles (119.2 square kilometer); bounded by the following coordinates:

No	Latitude (N)	Longitude (W)	Remarks
1	06° 49'.170	058° 12'.003	WGS 84 (Zone 21)
2	06° 50'.921	058° 10'.851	WGS 84 (Zone 21)
3	06° 58'.101	058° 03'.700	WGS 84 (Zone 21)
4	07° 02'.177	057° 59'.640	WGS 84 (Zone 21)
5	07° 01'.228	057° 57'.519	WGS 84 (Zone 21)
6	06° 55'.039	058° 03'.687	WGS 84 (Zone 21)
7	06° 54'.304	058° 04'.773	WGS 84 (Zone 21)
8	06° 49'.856	058° 09'.611	WGS 84 (Zone 21)
9	06° 49'.745	058° 10'.488	WGS 84 (Zone 21)
10	06° 48'.872	058° 10'.632	WGS 84 (Zone 21)
11	06° 48'.880	058° 11'.123	WGS 84 (Zone 21)
12	06° 48'.965	058° 11'.123	WGS 84 (Zone 21)
13	06° 49'.094	058° 11'.662	WGS 84 (Zone 21)
14	06° 49'.067	058° 11'.858	WGS 84 (Zone 21)



All mariners are required to stay clear of these vessels, and navigate with extreme caution when in the vicinity.

Inset area is included for further guidance

Communication can be made to the vessel, or the Georgetown Lighthouse, on VHF Ch. 16.

L Baird
Harbour Master (Ag)
For Director General

July 02, 2025