

**MINISTRY OF PUBLIC WORKS**  
**MARITIME ADMINISTRATION DEPARTMENT**

**NOTICE TO MARINERS**

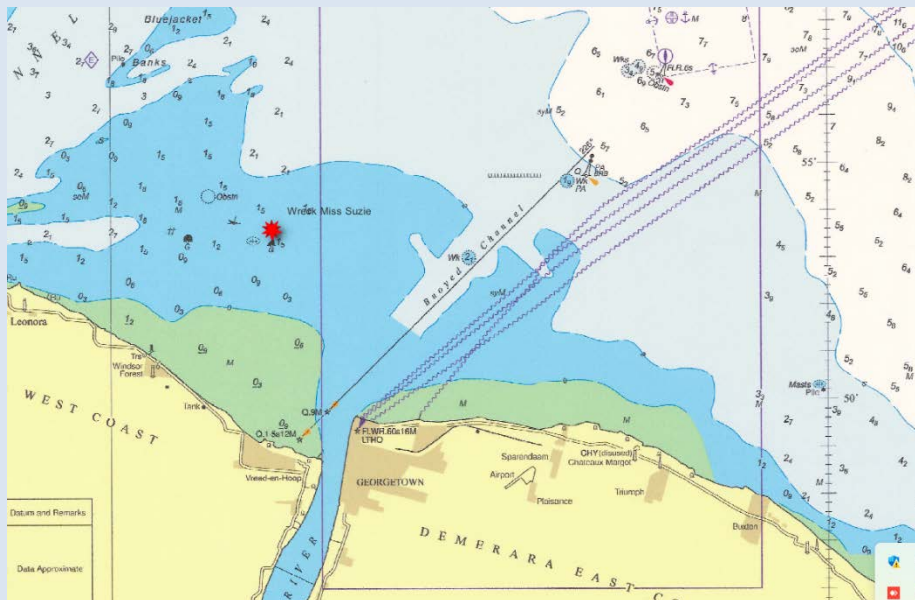
**No. 165 (2024) Guyana**

**APPROACHES TO DEMERARA AND ESSEQUIBO RIVER**

*Maritime Administration Department* wishes to inform all Mariners that MV “Miss Suzie” sank approximately four decimal four (4.4) nautical miles with bearing 330° T from the Georgetown Light House. This wreck lies in a charted depth of 1.8 meters.

The wreck lies in the position as follows:

No.	NAME LOCATION	POSITION Latitude N Longitude W ° '	CHARACT ER & PERIOD	H.T ABOVE H.W.M (metres)	VIS IN MLS	STRUCTURE	REMARKS
<b>C</b> 01.	<b>DEMERARA</b>  Wreck Miss Suzie	06 53.631 058 11.529	FL. W Q	3.5	4	Black Metal Pipe with Red Horizontal Band secured to vessel	Hull Visible at High Water



*Inset of Chart BA 527 showing Location of Sunken Vessel*

All mariners are required to stay clear of this wreck, and navigate with extreme caution when in the vicinity.

Communication can be made to the Georgetown Lighthouse, on VHF Ch. 16.

L Baird  
**Harbour Master (Ag)**  
*For Director General*

**December 20, 2024**