

MINISTRY OF PUBLIC WORKS
MARITIME ADMINISTRATION DEPARTMENT

NOTICE TO MARINERS

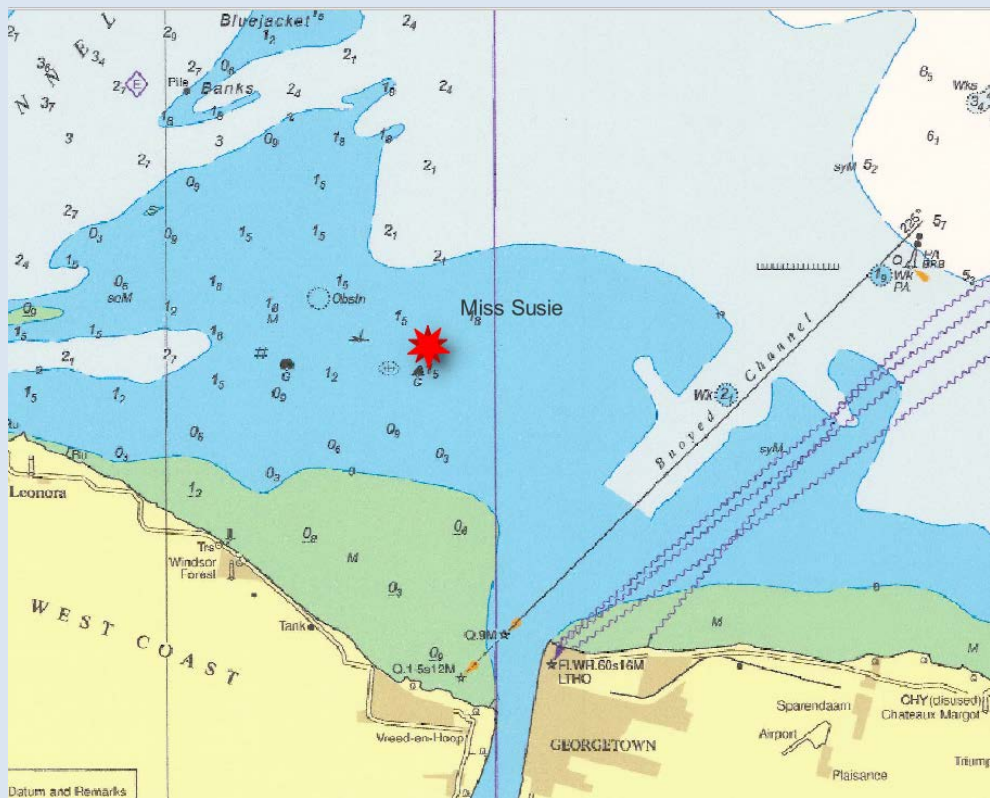
No. 153(2024) Guyana

DEMERARA RIVER MOUTH

Maritime Administration Department wishes to inform all Mariners that MV “**Miss Susie**” sank approximately four decimal four (4.4) nautical miles with bearing 330° T from the Georgetown Light House. This wreck lies in a charted depth of approximately 1.8 meters.

The wreck lies in the position as follows:

No.	NAME LOCATION	POSITION Latitude N Longitude W	CHARACT ER & PERIOD	H.T ABOVE H.W.M (metres)	VIS IN MLS	STRUCTURE	REMARKS
C 01.	DEMERARA Wreck Susie	06 53.656 058 11.471					Hull Visible at High Water Unlit



Inset of Chart BA 527 showing Location of Sunken Vessel

All mariners are required to stay clear of this wreck, and navigate with extreme caution when in the vicinity.

Communication can be made to the Georgetown Lighthouse, on VHF Ch. 16.

L Baird
Harbour Master (Ag)
For Director General

November 15, 2024