

MINISTRY OF PUBLIC WORKS

MARITIME ADMINISTRATION DEPARTMENT

NOTICE TO MARINERS

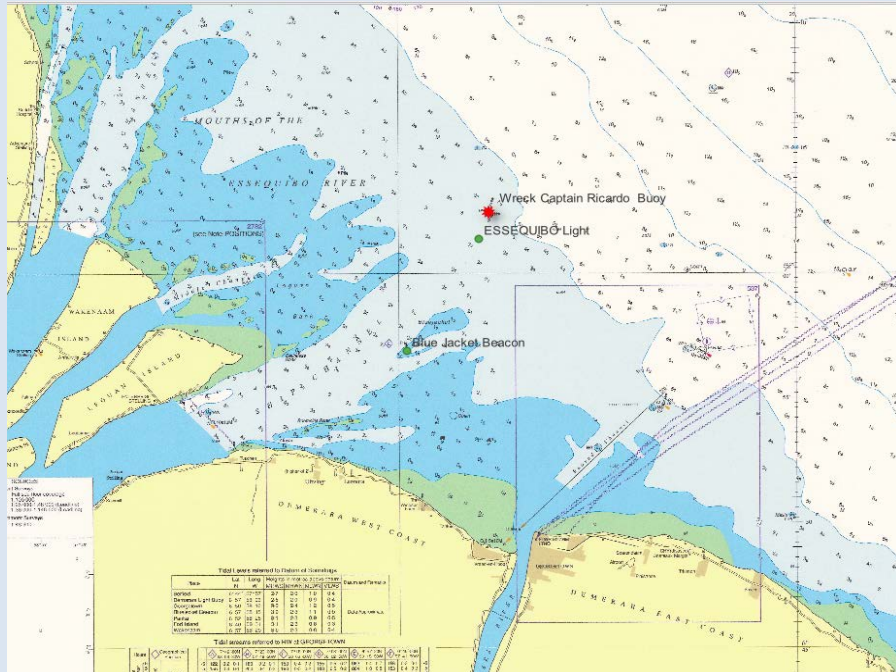
No.85 (2024) Guyana

ESSEQUIBO RIVER

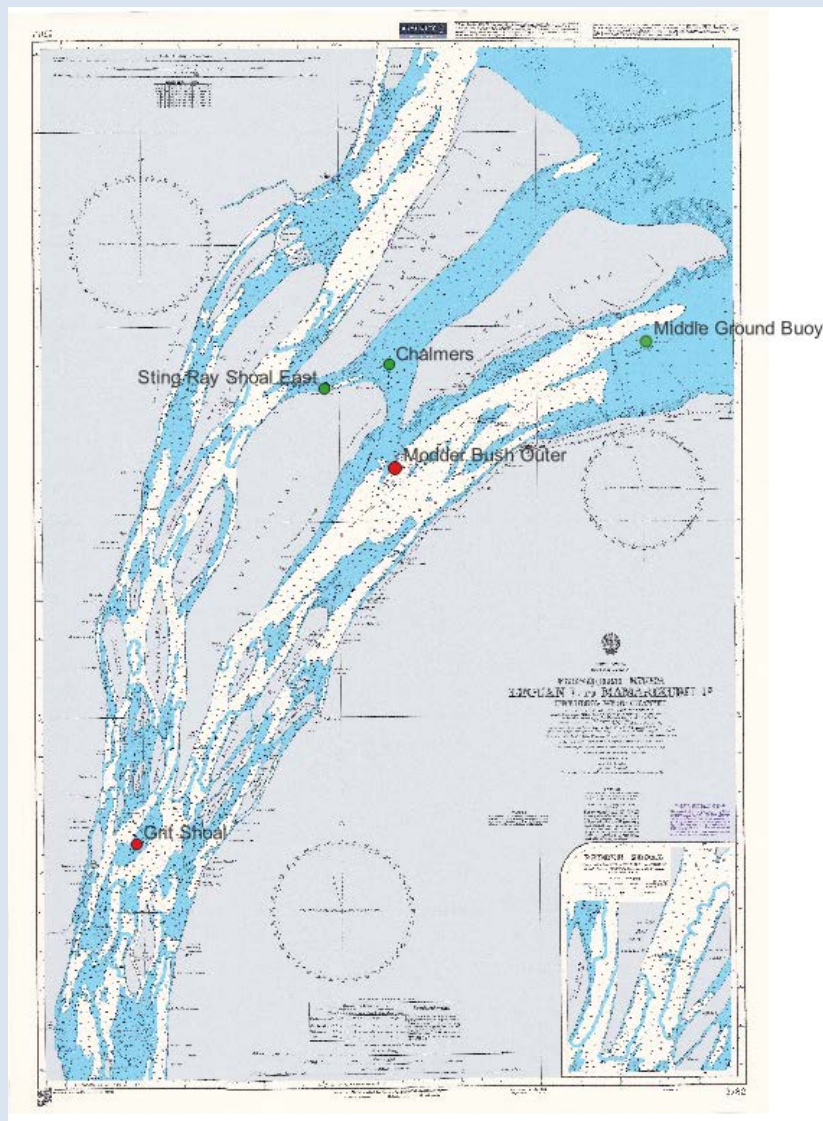
The *Maritime Administration Department (MARAD)* wishes to advise that ten (10) **Aids to Navigation** were established at the Approaches and along the Essequibo River.

The characteristics of these Aids to Navigations are as follows:

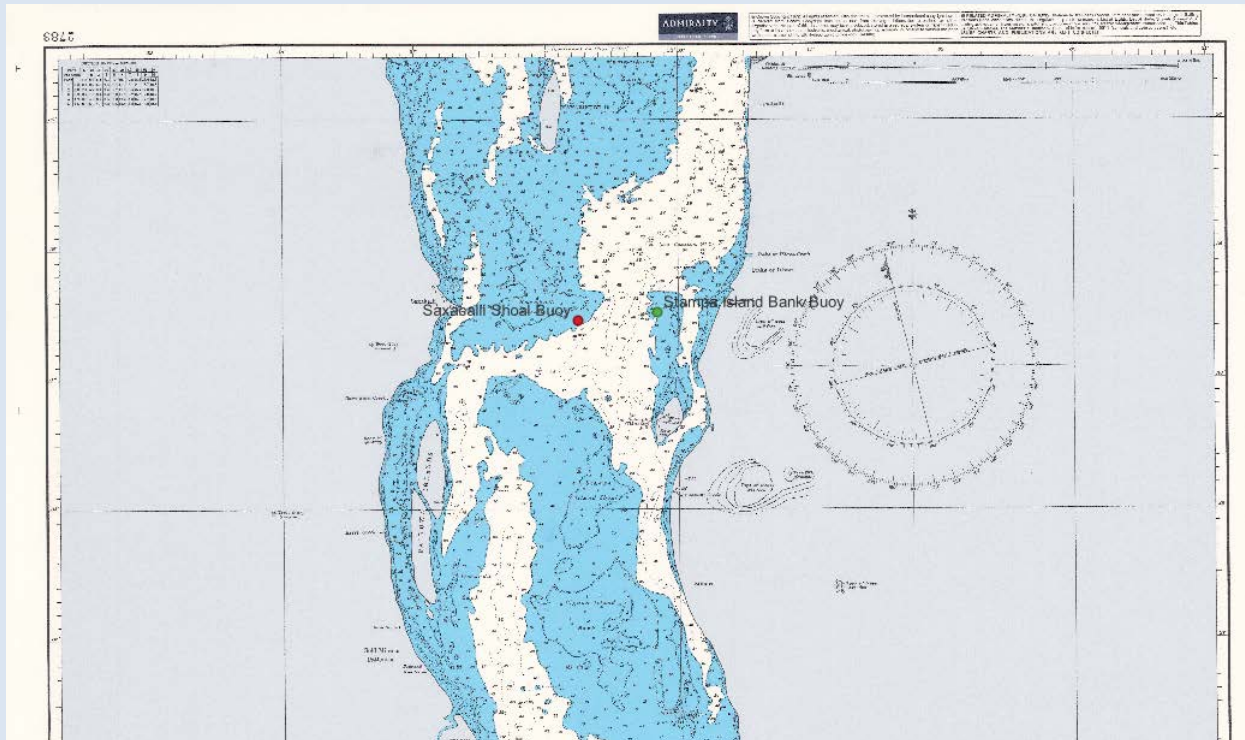
No.	NAME LOCATION	POSITION Latitude N Longitude W ° '	CHARACT ER & PERIOD	H.T ABOVE H.W.M (metres)	VIS IN MLS	STRUCTURE	REMARKS
B	ESSEQUIBO						
01.	Wreck "Captain Ricardo"	07 02.375 058 11.564	FI Q YB	2.07	4	Yellow & Blue Vertically Striped Buoy with Top mark	Re-established
02.	Essequibo Light	07 01.567 058 11.824	FL Q G	1.83	4	Green Buoy with Green Cylindrical Top mark	Re-established
03.	Blue Jacket (U)Beacon	06 56.924 058 14.631	FL Q G	3.0	4	6 Single Piles	Under Construction
04.	Dauntless Bank	06 57.112 058 18.012	FL Q R	1.83		Red Buoy with Red Conical Top mark	Established
05.	Middle Ground	06 54.465 058 22.386	FL Q G	1.83	4	Green Buoy with Green Cylindrical Top mark	Established
06.	Modder Bush Outer	06 51.400 058 28.600	FL Q R	1.83	4	Red Buoy	Lit
07.	Chalmers	06 54.030 058 28.740	FI Q G	1.83		Green Buoy	Lit
08.	Sting Ray Shoal East	06 53.430 058 30.420	FI Q G	1.83		Green Buoy	Lit
09.	Grit Shoal	06 41.746 058 35.225	FL Q R	1.83		Red Buoy	Lit
10.	Stampa Island Shoals	06 34.502 058 35.188	FI Q G	1.83		Green Buoy with Green Cylindrical Top mark	Established
11.	Saxacalli Shoals	06 34.248 058 35.776	FL Q R	1.83		Red Buoy with Red Conical Top mark	Established



Inset of Chart BA 527 showing areas of operation



Inset of Chart BA 2782 showing areas of operation



Inset of Chart BA 2783 showing areas of operation

This information supersedes information provided on **Pages 38 & 39** of **2024 List of Lights**

Inset position is included for further guidance.

Communication can be made with the Georgetown Lighthouse on VHF Ch. 16.

G Archer
Harbour Master (Ag)
For Director General

June 21, 2024