

MINISTRY OF PUBLIC WORKS

MARITIME ADMINISTRATION DEPARTMENT

NOTICE TO MARINERS

No. 77 (2024) Guyana

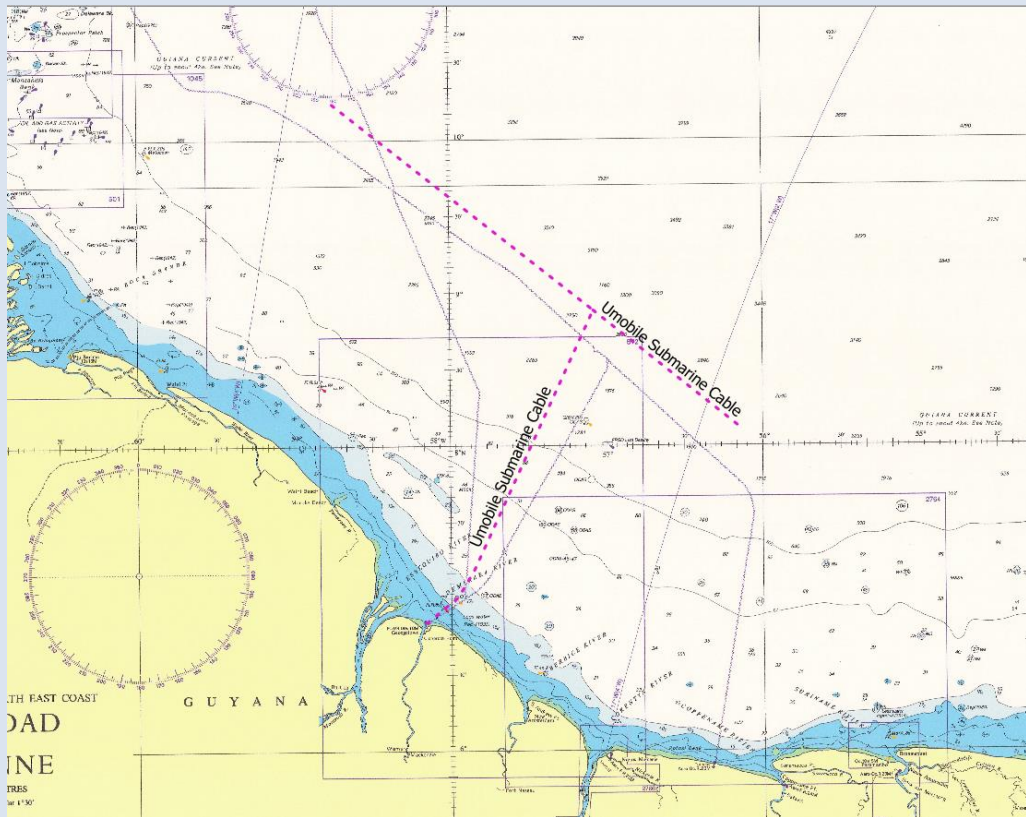
OFFSHORE GUYANA

The *Maritime Administration Department (MARAD)* hereby notifies all vessels operating within the Port of Georgetown and/ or within Guyana's Exclusive Economic Zone, that *U-Mobile (Cellular) Inc* has completed laying of its Subsea Fibre Optic Cables.

These submarine cables were laid along the following coordinates:

Submarine Cable (West to East Section)			
No	Latitude (N)	Longitude (W)	Remarks
1	10° 16'.322	058° 53'.2786	WGS 84 (Zone 21)
2	10° 11'.914	058° 50'.000	WGS 84 (Zone 21)
3	10° 10'.729	058° 49'.119	WGS 84 (Zone 21)
4	10° 06'.205	058° 42'.179	WGS 84 (Zone 21)
5	10° 00'.616	058° 38'.930	WGS 84 (Zone 21)
6	09° 57'.014	058° 35'.626	WGS 84 (Zone 21)
7	09° 55'.538	058° 31'.530	WGS 84 (Zone 21)
8	09° 55'.953	058° 28'.368	WGS 84 (Zone 21)
9	09° 58'.124	058° 23'.401	WGS 84 (Zone 21)
10	09° 58'.522	058° 20'.115	WGS 84 (Zone 21)
11	09° 57'.257	058° 16'.573	WGS 84 (Zone 21)
12	09° 54'.360	058° 13'.567	WGS 84 (Zone 21)
13	09° 40'.811	058° 05'.357	WGS 84 (Zone 21)
14	09° 34'.584	057° 58'.636	WGS 84 (Zone 21)
15	09° 00'.3660	057° 12'.821	WGS 84 (Zone 21)
16	08° 48'.778	057° 02'.536	WGS 84 (Zone 21)
17	08° 46'.235	056° 59'.700	WGS 84 (Zone 21)
18	08° 45'.115	056° 56'.048	WGS 84 (Zone 21)
19	08° 15'.083	056° 18'.549	WGS 84 (Zone 21)
20	08° 08'.969	056° 09'.244	WGS 84 (Zone 21)
Submarine Cable (North to South Section)			
1	08° 46'.235	056° 59'.700	WGS 84 (Zone 21)
2	08° 45'.684	057° 03'.573	WGS 84 (Zone 21)
3	08° 43'.830	057° 06'.267	WGS 84 (Zone 21)
4	08° 39'.340	057° 08'.790	WGS 84 (Zone 21)
5	08° 02'.786	057° 21'.389	WGS 84 (Zone 21)
6	07° 57'.966	057° 24'.052	WGS 84 (Zone 21)
7	07° 56'.908	057° 24'.741	WGS 84 (Zone 21)
8	07° 55'.863	057° 25'.110	WGS 84 (Zone 21)
9	07° 54'.633	057° 25'.328	WGS 84 (Zone 21)

10	07° 54'.147	057° 25'.485	WGS 84 (Zone 21)
11	07° 53'.840	057° 25'.657	WGS 84 (Zone 21)
12	07° 53'.697	057° 25'.782	WGS 84 (Zone 21)
13	07° 53'.515	057° 25'.836	WGS 84 (Zone 21)
14	07° 53'.318	057° 25'.945	WGS 84 (Zone 21)
15	07° 53'.131	057° 26'.109	WGS 84 (Zone 21)
16	07° 52'.843	057° 26'.417	WGS 84 (Zone 21)
17	07° 52'.222	057° 26'.885	WGS 84 (Zone 21)
18	07° 51'.482	057° 27'.486	WGS 84 (Zone 21)
19	07° 50'.768	057° 28'.221	WGS 84 (Zone 21)
20	07° 49'.826	057° 28'.838	WGS 84 (Zone 21)
21	07° 47'.337	057° 30'.196	WGS 84 (Zone 21)
22	07° 08'.540	057° 52'.265	WGS 84 (Zone 21)
23	07° 07'.646	057° 52'.887	WGS 84 (Zone 21)
24	07° 07'.323	057° 53'.053	WGS 84 (Zone 21)
25	07° 06'.625	057° 53'.230	WGS 84 (Zone 21)
26	07° 06'.392	057° 53'.347	WGS 84 (Zone 21)
27	07° 04'.968	057° 54'.174	WGS 84 (Zone 21)
28	07° 04'.749	057° 54'.281	WGS 84 (Zone 21)
29	07° 04'.562	057° 54'.391	WGS 84 (Zone 21)
30	07° 04'.473	057° 54'.473	WGS 84 (Zone 21)
31	07° 04'.231	057° 54'.794	WGS 84 (Zone 21)
32	07° 04'.152	057° 54'.863	WGS 84 (Zone 21)
33	07° 00'.724	057° 56'.697	WGS 84 (Zone 21)
34	07° 00'.524	057° 56'.803	WGS 84 (Zone 21)
35	06° 59'.476	057° 57'.606	WGS 84 (Zone 21)
36	06° 58'.888	057° 58'.387	WGS 84 (Zone 21)
37	06° 58'.512	057° 59'.097	WGS 84 (Zone 21)
38	06° 58'.390	057° 59'.265	WGS 84 (Zone 21)
39	06° 58'.330	057° 59'.320	WGS 84 (Zone 21)
40	06° 57'.978	057° 59'.533	WGS 84 (Zone 21)
41	06° 57'.920	057° 59'.589	WGS 84 (Zone 21)
42	06° 54'.379	058° 04'.493	WGS 84 (Zone 21)
43	06° 52'.873	058° 04'.579	WGS 84 (Zone 21)
44	06° 49'.893	058° 09'.886	WGS 84 (Zone 21)



Inset of Chart BA 517 showing areas of as laid cables

Vessels are therefore prohibited from anchoring near these cables. Anchoring would be allowed at a minimum distance of **250 meters** from the cable position when the vessel rides on her anchor.

Communication can be made with the Georgetown Lighthouse on VHF Ch. 16.

G Archer
Harbour Master (Ag)
For Director General

May 25, 2024