

**MINISTRY OF PUBLIC WORKS**

**MARITIME ADMINISTRATION DEPARTMENT**

**NOTICE TO MARINERS**

No. 54 (2024) Guyana

**OFFSHORE GUYANA**

*ExxonMobil Guyana Limited (EMGL)* will continue with pipe laying activities from the West Coast of Demerara to Offshore within Guyana’s Exclusive Economic Zone.

Shallow Water Pipe Laying Barge “Stingray” and Shallow Water Pipe Laying Barge “Tamuata” will be engaged in pipe laying activities which will conclude on **August 31, 2024** and will incorporate the use of the undermentioned vessels that would display the international signal for vessels engaged in such activities:

- \* Morag M
- \* Rewa
- \* Coastal Challenger
- \* SSC Adelaar
- \* VO 2695
- \* Stingray
- \* Captain P
- \* Atlantic Liberty
- \* Yara
- \* Ella F
- \* Comanche
- \* Coastal Enterprise
- \* Adel
- \* Gilligan Island
- \* Waddenstroem
- \* Seazip 5
- \* Seraya

The Marine Exclusion Zone stretches from the coast to approximately 19.3 nautical miles (35.7 kilometers) offshore of Guyana and covers an area of 64.5 square nautical miles (221.2 square kilometers) inclusive of the below mentioned transit corridors for vessels; bounded by the following coordinates:

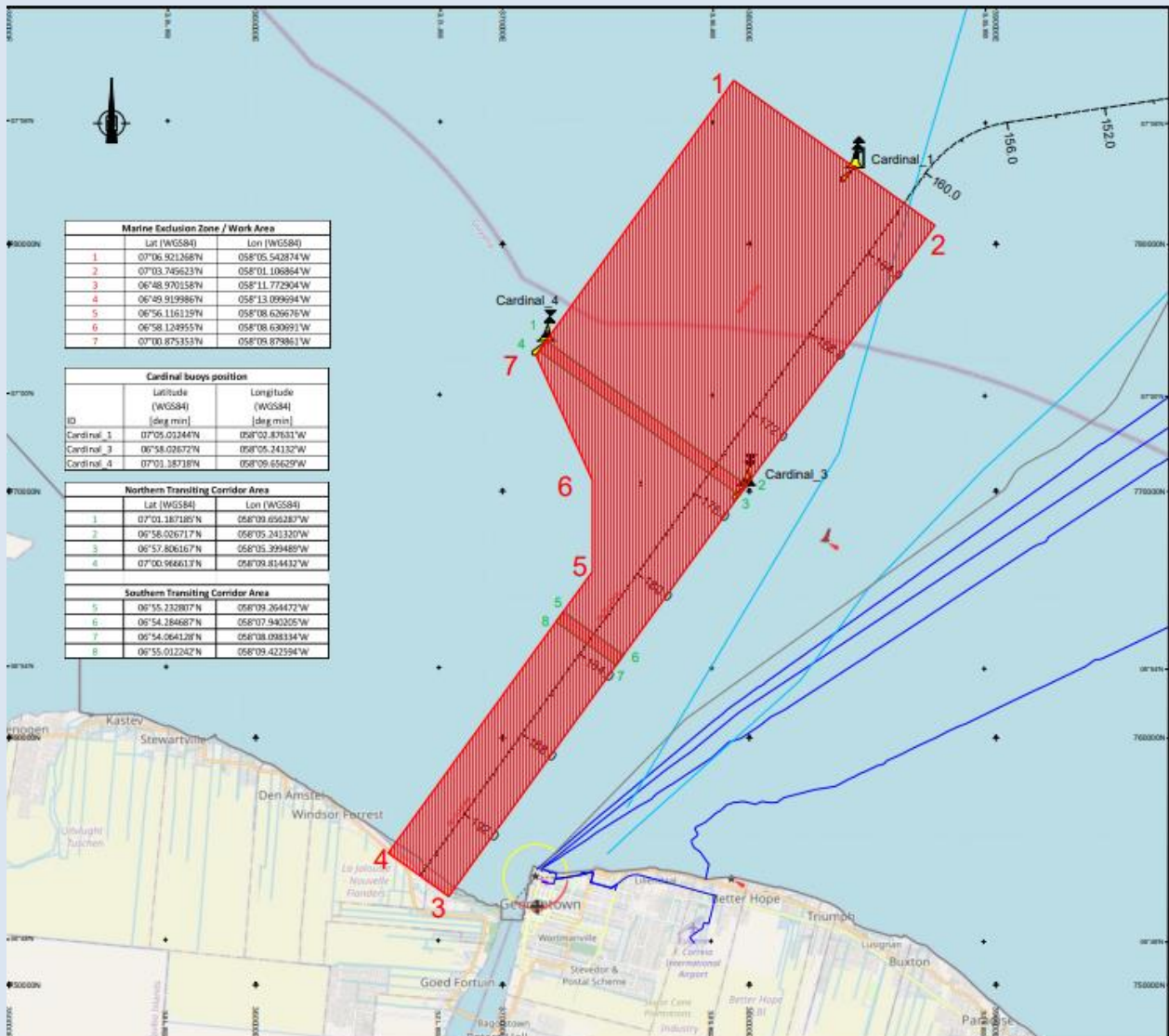
<b>Marine Exclusion Zone/ Work Area</b>			
<b>No</b>	<b>Latitude (N)</b>	<b>Longitude (W)</b>	<b>Remarks</b>
1	07°06'.921	058°05'.543	WGS 84 (Zone 21)
2	07°03'.746	058°01'.107	WGS 84 (Zone 21)
3	06°48'.970	058°11'.773	WGS 84 (Zone 21)
4	06°49.920	058°13.100	WGS 84 (Zone 21)
5	06°56.116	058°08.627	WGS 84 (Zone 21)
6	06°58'.125	058°09'.631	WGS 84 (Zone 21)
7	07°00'.875	058°09'.880	WGS 84 (Zone 21)

Two transits corridors have been excluded from the area for vessels transiting between the Essequibo River and Demerara River Mouths; these areas will be marked with lateral buoys, bounded by the following coordinates:

<b>Northern Transiting Corridor Area</b>			
<b>No</b>	<b>Latitude (N)</b>	<b>Longitude (W)</b>	<b>Remarks</b>
1	07° 01'.187	058°09.656	WGS 84 (Zone 21)
2	06°58'.027	058°05'.241	WGS 84 (Zone 21)
3	06°57'.806	058°05'.399	WGS 84 (Zone 21)
4	07°00'.966	058°09'.814	WGS 84 (Zone 21)
<b>Southern Transiting Corridor Area</b>			
5	06° 55'.233	058° 09'.264	WGS 84 (Zone 21)
6	06°54'.285	058° 07'.940	WGS 84 (Zone 21)
7	06°54'.064	058° 08.098	WGS 84 (Zone 21)
8	06°55.012	058° 09'.423	WGS 84 (Zone 21)

The Wet Storage area is approximately 11.1 nautical miles (20.6 kilometers) from the coast Guyana and covers an area of 24.6 square nautical miles (84.5 square kilometers) partially bounded by cardinal buoys; by the following coordinates

Wet Storage Area			
No	Latitude (N)	Longitude (W)	Remarks
1	07°05.816	058°03.998	WGS 84 (Zone 21)
2	07°05.0124	058°02.876	North Cardinal Buoy
3	07°03.761	058°01.128	WGS 84 (Zone 21)
4	06°58'.027	058°05'.241	South Cardinal Buoy
5	07°00.081	058°08.111	West Cardinal Buoy



*Inset showing Exclusion Zone inclusive of transit corridors area*

All mariners are required to stay clear of these vessels and navigate with extreme caution when in the vicinity.

Inset area is included for further guidance

Communication can be made to these vessels or the Georgetown Lighthouse on VHF Ch. 16.

G Archer  
**Harbour Master (Ag)**  
 For Director General

April 02, 2024