

MINISTRY OF PUBLIC WORKS

MARITIME ADMINISTRATION DEPARTMENT

NOTICE TO MARINERS

No. 36 (2024) Guyana

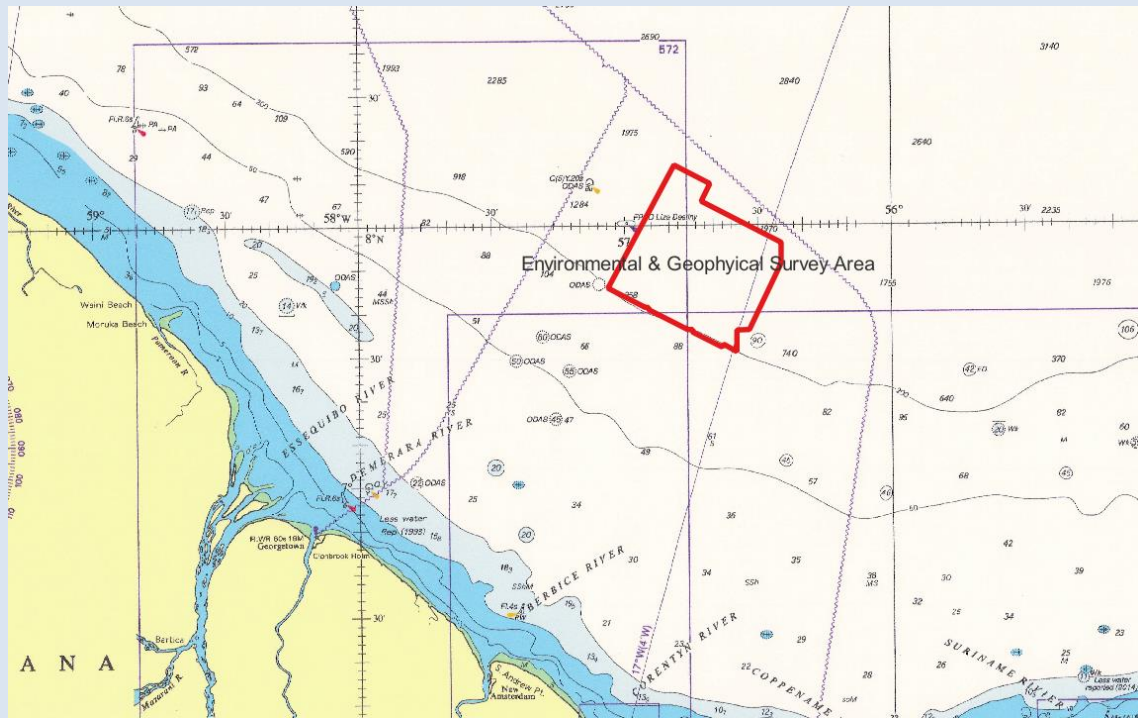
OFFSHORE GUYANA

ExxonMobil Guyana Limited (EMGL) will continue Geotechnical and Environmental Baseline Surveying operations within the **Stabroek Block** of Guyana's Exclusive Economic Zone.

This exercise is scheduled to conclude on **December 31, 2024**, and will incorporate the use of *OSV Connor Bordelon* which will display the international signal for vessel engaged in such activity.

The survey area is situated approximately 85.96 nautical miles (159.25 kilometers) from the Coast of Guyana, and covers an area of 892.10 square nautical miles (3059.90 square kilometers), bounded by the following coordinates:

No	Latitude (N)	Longitude (W)	Remarks
1.	08° 12'.157	056° 49'.263	WGS 84 (Zone 21)
2.	08° 07'.969	056° 41'.139	WGS 84 (Zone 21)
3.	08° 03'.988	056° 43'.095	WGS 84 (Zone 21)
4.	07° 54'.715	056° 25'.000	WGS 84 (Zone 21)
5.	07° 50'.000	056° 25'.000	WGS 84 (Zone 21)
6.	07° 35'.000	056° 32'.174	WGS 84 (Zone 21)
7.	07° 34'.892	056° 35'.000	WGS 84 (Zone 21)
8.	07° 30'.000	056° 35'.000	WGS 84 (Zone 21)
9.	07° 31'.689	056° 38'.005	WGS 84 (Zone 21)
10.	07° 31'.038	056° 38'.342	WGS 84 (Zone 21)
11.	07° 34'.405	056° 45'.000	WGS 84 (Zone 21)
12.	07° 35'.000	056° 45'.027	WGS 84 (Zone 21)
13.	07° 35'.000	056° 46'.141	WGS 84 (Zone 21)
14.	07° 39'.486	056° 55'.000	WGS 84 (Zone 21)
15.	07° 39'.973	056° 55'.000	WGS 84 (Zone 21)
16.	07° 40'.000	056° 55'.788	WGS 84 (Zone 21)
17.	07° 44'.327	057° 04'.186	WGS 84 (Zone 21)



Insert of Chart BA 517 showing area of operation

All mariners are required to stay clear of this vessel and navigate with extreme caution when in the vicinity.

Inset area is included for further guidance

Communication can be made to the vessel or the Georgetown Lighthouse on VHF Ch. 16.

G Archer
Harbour Master (Ag)
 For Director General

February 14, 2024