

MINISTRY OF PUBLIC WORKS

MARITIME ADMINISTRATION DEPARTMENT

NOTICE TO MARINERS

No. 170 (2023) Guyana

OFFSHORE GUYANA

ExxonMobil Guyana Limited (EMGL) will continue with pipe laying activities from the West Coast of Demerara to Offshore within Guyana's Exclusive Economic Zone.

Shallow Water Pipe Laying Barge "Stingray" will be engaged in pipe laying activities and will incorporate the use of the undermentioned vessels that would display the international signal for vessels engaged in such activities:

* Morag M

* Ella F

The Marine Exclusion Zone stretches from the coast to approximately 17.8 nautical miles (33 kilometers) offshore of Guyana and covers an area of 60.6 square nautical miles (207.9 square kilometers) inclusive of the below mentioned transit corridors for vessels; bounded by the following coordinates:

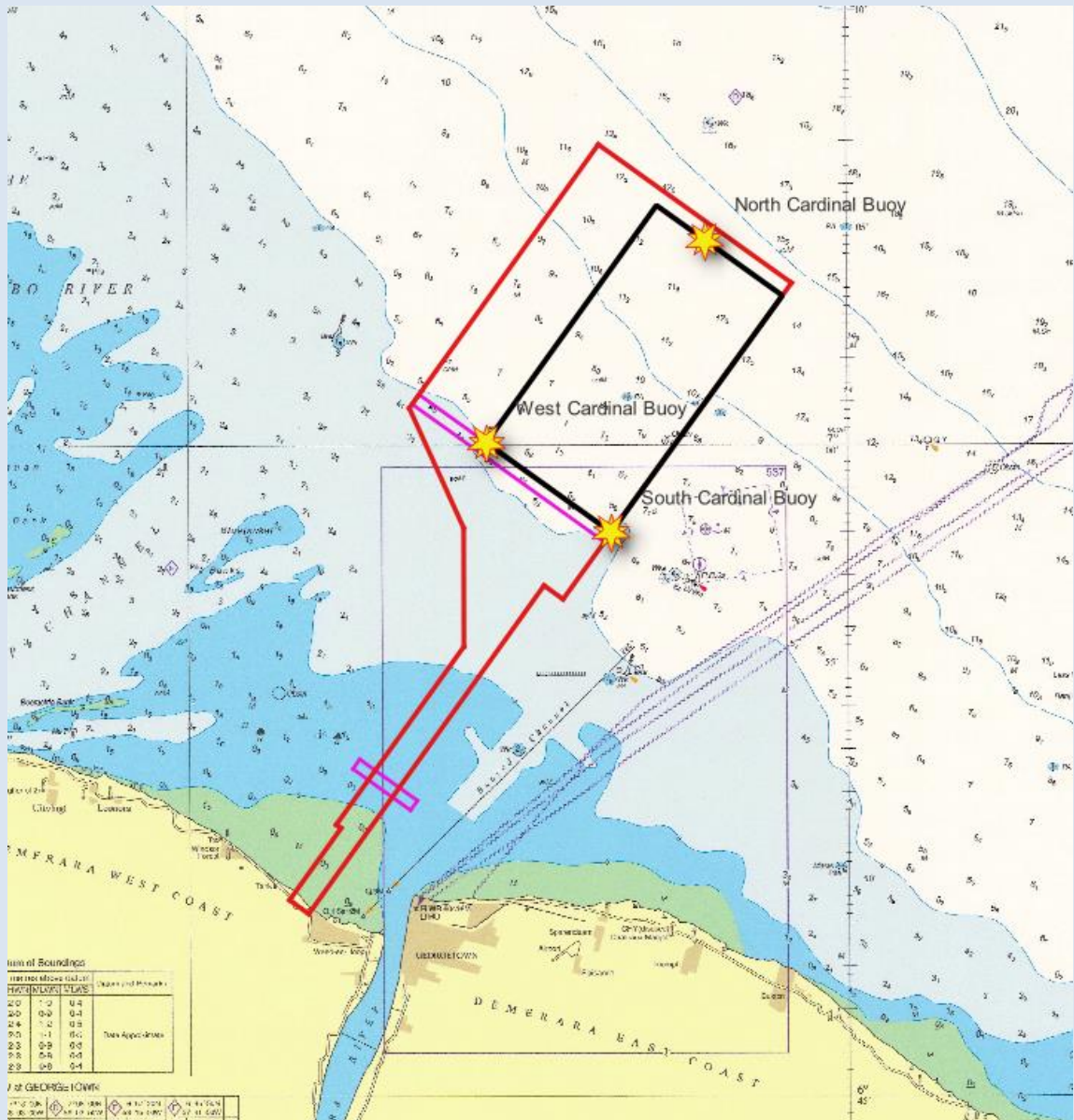
Marine Exclusion Zone/ Work Area			
No	Latitude (N)	Longitude (W)	Remarks
1	07° 05'.382	058° 06'.647	WGS 84 (Zone 21)
2	07°02'.211	058°02'.215	WGS 84 (Zone 21)
3	06°56'.470	058°06'.347	WGS 84 (Zone 21)
4	06°56'.804	058°06'.785	WGS 84 (Zone 21)
5	06° 49'.266	058° 12'.628	WGS 84 (Zone 21)
6	06°49'.582	058°12 '.628	WGS 84 (Zone 21)
7	06°51'.234	058°11'.445	WGS 84 (Zone 21)
8	06°51'.313	058°11'.555	WGS 84 (Zone 21)
9	06°55'.403	058°08 '.624	WGS 84 (Zone 21)
10	06°58'.125	058°09'.630	WGS 84 (Zone 21)
11	07°00'.874	058°09'.878	WGS 84 (Zone 21)

Two transits corridors have been excluded from the area for vessels transiting between the Essequibo River and Demerara River Mouths; these areas will be marked with lateral buoys, bounded by the following coordinates:

Northern Transiting Corridor Area			
No	Latitude (N)	Longitude (W)	Remarks
1	07° 01'.187	058° 09'.626	WGS 84 (Zone 21)
2	06°58'.027	058°05'.241	WGS 84 (Zone 21)
3	06°57'.806	058°05'.399	WGS 84 (Zone 21)
4	07°00'.966	058°09'.814	WGS 84 (Zone 21)
Southern Transiting Corridor Area			
1	06° 52'.815	058° 11'.015	WGS 84 (Zone 21)
2	06°51'.867	058°09 '.691	WGS 84 (Zone 21)
3	06°51'.646	058°06'.032	WGS 84 (Zone 21)
4	06°52'.549	058°11'.174	WGS 84 (Zone 21)

The Wet Storage area is approximately 11.8 nautical miles (21.8 kilometers) from the coast Guyana and covers an area of 23.5 square nautical miles (80.6 square kilometers) partially bounded by cardinal buoys; by the following coordinates

Wet Storage Area			
No	Latitude (N)	Longitude (W)	Remarks
1	07° 05'.529	058° 04'.204	WGS 84 (Zone 21)
2	07°04'.740	058°03'.092	North Cardinal Buoy
3	07°03'.461	058°01'.314	WGS 84 (Zone 21)
4	06°58'.027	058°05'.241	South Cardinal Buoy
5	07° 00'.081	058° 08'.111	West Cardinal Buoy



Inset of Chart BA 527 showing Exclusion Zone inclusive of transit corridors area

All mariners are required to stay clear of these vessels and navigate with extreme caution when in the vicinity.

Inset position is included for further guidance.

Communication can be made with these vessels or the Georgetown Lighthouse, on VHF Ch. 16.

G Archer
Harbour Master (Ag)
 For Director General

December 28, 2023