

**MINISTRY OF PUBLIC WORKS**

**MARITIME ADMINISTRATION DEPARTMENT**

**NOTICE TO MARINERS**

**No. 160 (2023) Guyana**

**OFFSHORE GUYANA**

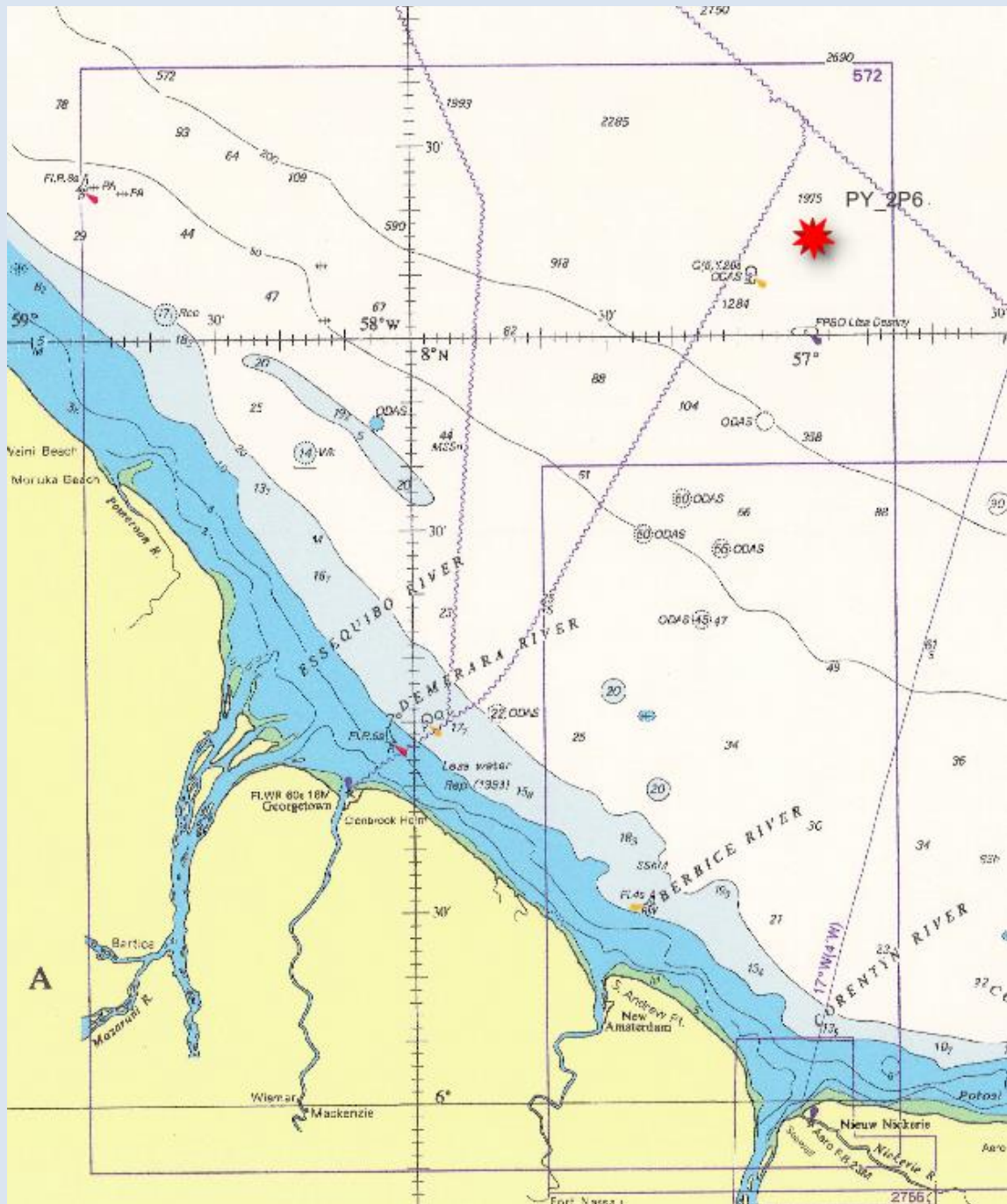
On *November 11, 2023 ExxonMobil Guyana Limited (EMGL)* will continue developmental drilling operations at **PY\_2P6 Well Site** within the **Stabroek Block** of Guyana's Exclusive Economic Zone.

**MODU Noble Sam Croft** will be engaged in drilling activities which will conclude on **December 15, 2023**, and will incorporate the use of the undermentioned vessels that would display the international signal for vessels engaged in such activities:

- \* Gary Rook
- \* Russell Bouziga
- \* Robert Adams
- \* Seacor Congo
- \* Jack Edwards
- \* Seacor Murray
- \* C- Installer
- \* Skandi Constructor
- \* Emily Day Mc Call
- \* Charlie Comeaux
- \* Ted Smith
- \* C-Confidence
- \* Sanibel Island
- \* Paradise Island
- \* Seacor Demerara
- \* HOS Woodland
- \* Wine Island
- \* Russell Adams
- \* C-Legend
- \* Seacor Amazon
- \* Maersk Nomad
- \* Michael Crombie McCall
- \* Guyana Hero
- \* Gerard Tide
- \* Havila Phoenix

The well site is situated approximately 110.3 nautical miles (204.5 kilometers) off the Coast of Guyana and covers an area of 0.29 square nautical miles (1 square kilometer); bounded by the following coordinates:

<b>PY_2P6 Well Site</b>			
<b>No</b>	<b>Latitude (N)</b>	<b>Longitude (W)</b>	<b>Remarks</b>
1	08° 13'.713	056° 59'.084	WGS 84 (Zone 21)
2	08° 13'.713	056° 58'.541	WGS 84 (Zone 21)
3	08° 13'.177	056° 58'.541	WGS 84 (Zone 21)
4	08° 13'.177	056° 59'.084	WGS 84 (Zone 21)



*Inset of Chart BA 517 showing areas of operation*

All mariners are required to stay clear of these vessels and navigate with extreme caution when in the vicinity.

Inset position is included for further guidance.

This notice supersedes information provided in **Notice to Mariners 147 of 2023**.

Communication can be made to these vessels or the Georgetown Lighthouse on VHF Ch. 16.

G Archer  
**Harbour Master (Ag)**  
 For Director General

November 10, 2023