

**MINISTRY OF PUBLIC WORKS**

**MARITIME ADMINISTRATION DEPARTMENT**

**NOTICE TO MARINERS**

**No. 138 (2023) Guyana**

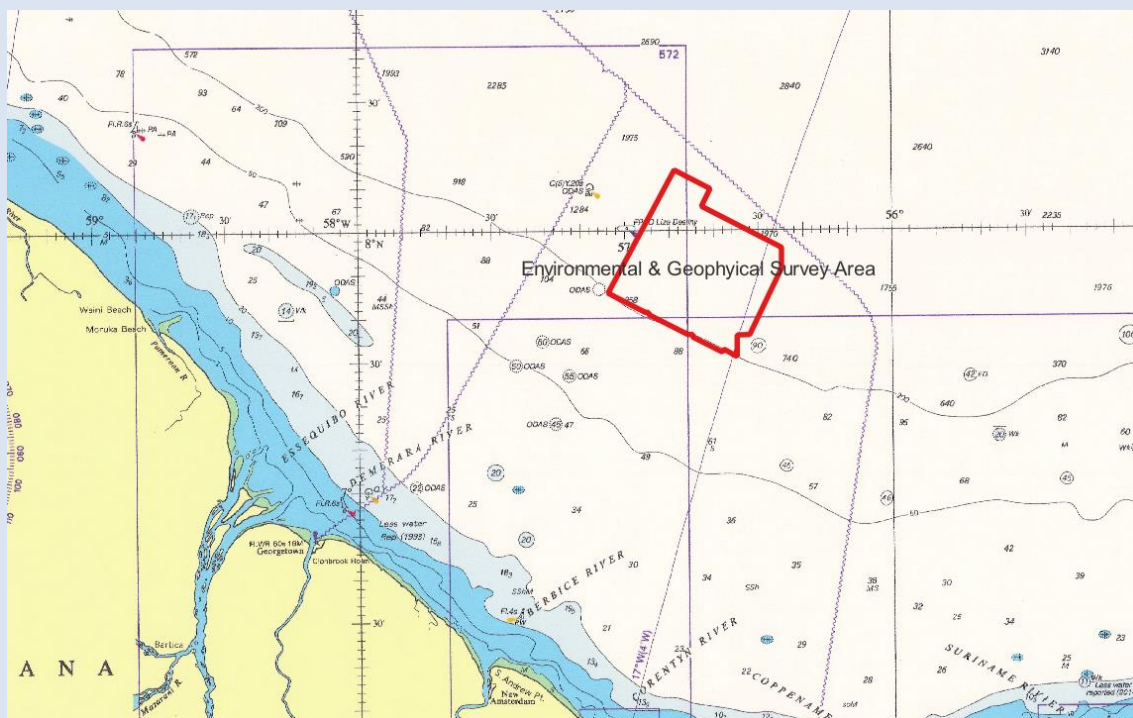
**OFFSHORE GUYANA**

On *September 28, 2023*, *ExxonMobil Guyana Limited (EMGL)* will conduct Geotechnical and Environmental Baseline Surveying operations within the **Stabroek Block** of Guyana's Exclusive Economic Zone.

This exercise is scheduled to conclude on **December 31, 2023**, and will incorporate the use of *OSV Connor Bordelon*, which will display the international signal for vessel engaged in such activity.

The survey area is situated approximately 85.96 nautical miles (159.25 kilometers) from the Coast of Guyana, and covers an area of 892.10 square nautical miles (3059.90 square kilometers), bounded by the following coordinates:

| <b>No</b> | <b>Latitude (N)</b> | <b>Longitude (W)</b> | <b>Remarks</b>   |
|-----------|---------------------|----------------------|------------------|
| 1.        | 08° 12'.157         | 056° 49'.263         | WGS 84 (Zone 21) |
| 2.        | 08° 07'.969         | 056° 41'.139         | WGS 84 (Zone 21) |
| 3.        | 08° 03'.988         | 056° 43'.095         | WGS 84 (Zone 21) |
| 4.        | 07° 54'.715         | 056° 25'.000         | WGS 84 (Zone 21) |
| 5.        | 07° 50'.000         | 056° 25'.000         | WGS 84 (Zone 21) |
| 6.        | 07° 35'.000         | 056° 32'.174         | WGS 84 (Zone 21) |
| 7.        | 07° 34'.892         | 056° 35'.000         | WGS 84 (Zone 21) |
| 8.        | 07° 30'.000         | 056° 35'.000         | WGS 84 (Zone 21) |
| 9.        | 07° 31'.689         | 056° 38'.005         | WGS 84 (Zone 21) |
| 10.       | 07° 31'.038         | 056° 38'.342         | WGS 84 (Zone 21) |
| 11.       | 07° 34'.405         | 056° 45'.000         | WGS 84 (Zone 21) |
| 12.       | 07° 35'.000         | 056° 45'.027         | WGS 84 (Zone 21) |
| 13.       | 07° 35'.000         | 056° 46'.141         | WGS 84 (Zone 21) |
| 14.       | 07° 39'.486         | 056° 55'.000         | WGS 84 (Zone 21) |
| 15.       | 07° 39'.973         | 056° 55'.000         | WGS 84 (Zone 21) |
| 16.       | 07° 40'.000         | 056° 55'.788         | WGS 84 (Zone 21) |
| 17.       | 07° 44'.327         | 057° 04'.186         | WGS 84 (Zone 21) |



*Insert of Chart BA 517 showing area of operation*

All mariners are required to stay clear of this vessel, and navigate with extreme caution when in the vicinity.

Inset area is included for further guidance

Communication can be made to this vessel, or the Georgetown Lighthouse, on VHF Ch. 16.

G Archer  
**Harbour Master (Ag)**  
*For Director General*

**September 25, 2023**