

MINISTRY OF PUBLIC WORKS

MARITIME ADMINISTRATION DEPARTMENT

NOTICE TO MARINERS

No. 107 (2023) Guyana

OFFSHORE GUYANA

Esso Exploration & Production Guyana Ltd (EEPGL) commenced pipe laying activities from the West Coast of Demerara to Offshore within Guyana's Exclusive Economic Zone.

Shallow Water Pipe Laying Barge "Stingray" will be engaged in pipe laying activities which will conclude on **November 01, 2023**, and will incorporate the use of the undermentioned vessels that would display the international signal for vessels engaged in such activities:

- * VMI Love
- * Coastal Vanguard
- * Kamarina
- * Sayan Polaris
- * Tamuata
- * Morag M
- * Leadership
- * Ella F
- * Adel
- * Risen Star
- * Yara
- * VO '2695'
- * Atlantic Liberty
- * Coastal Challenger
- * Lead 1
- * Costa La Luz
- * Lead Marlin
- * Lead 2
- * Costal Enterprise
- * Patriot
- * Deep Lorean
- * Wise Fox
- * Rewa
- * Comanche
- * Knockout P
- * SSC Adelaar

The pipe laying area stretches from the coast to approximately 39 nautical miles (72.2 kilometers) offshore of Guyana and covers an area of 65 square nautical miles (225 square kilometers); bounded by the following coordinates:

Gas to Shore Pipeline Work Area			
No	Latitude (N)	Longitude (W)	Remarks
1	07° 09'.810	057° 40'.192	WGS 84 (Zone 21)
2	07°09 '.176	057°39 '.521	WGS 84 (Zone 21)
3	07°04 '.282	058°01'.188	WGS 84 (Zone 21)
4	07°03'.966	058°01'.415	WGS 84 (Zone 21)
5	07°03.761	058°01'.128	WGS 84 (Zone 21)
6	06°58'.027	058°05'.241	WGS 84 (Zone 21)
7	06°56'.799	058°06'.790	WGS 84 (Zone 21)
8	06°49'.268	058°12'.189	WGS 84 (Zone 21)
9	06°49'.584	058°12'.630	WGS 84 (Zone 21)
10	06°51'.235	058°11'.447	WGS 84 (Zone 21)
11	06°51'.314	058°11'.557	WGS 84 (Zone 21)
12	06°55'.404	058°08'.625	WGS 84 (Zone 21)
13	06°58'.125	058°08'.631	WGS 84 (Zone 21)
14	07°01'.187	058°09'.657	WGS 84 (Zone 21)
15	07°06'.922	058°05'.544	WGS 84 (Zone 21)
16	07°04'.504	058°02'.166	WGS 84 (Zone 21)

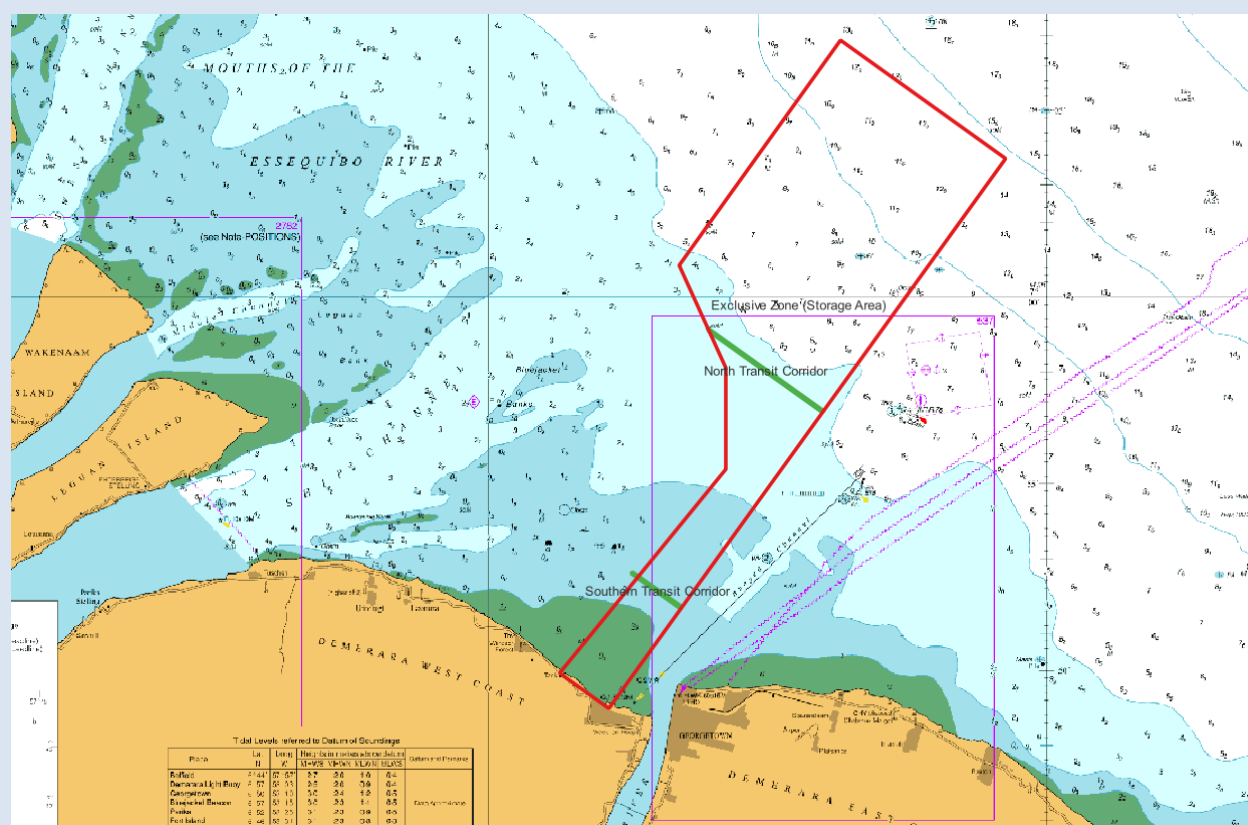
17	07°04'.820	058°01'.939	WGS 84 (Zone 21)
----	------------	-------------	------------------

The Exclusion Zone/ Storage area stretches from the coast to approximately 17.8 nautical miles (33 kilometers) offshore of Guyana and covers an area of 60.6 square nautical miles (207.9 square kilometers) inclusive of the below mentioned transit corridors for vessels; bounded by the following coordinates:

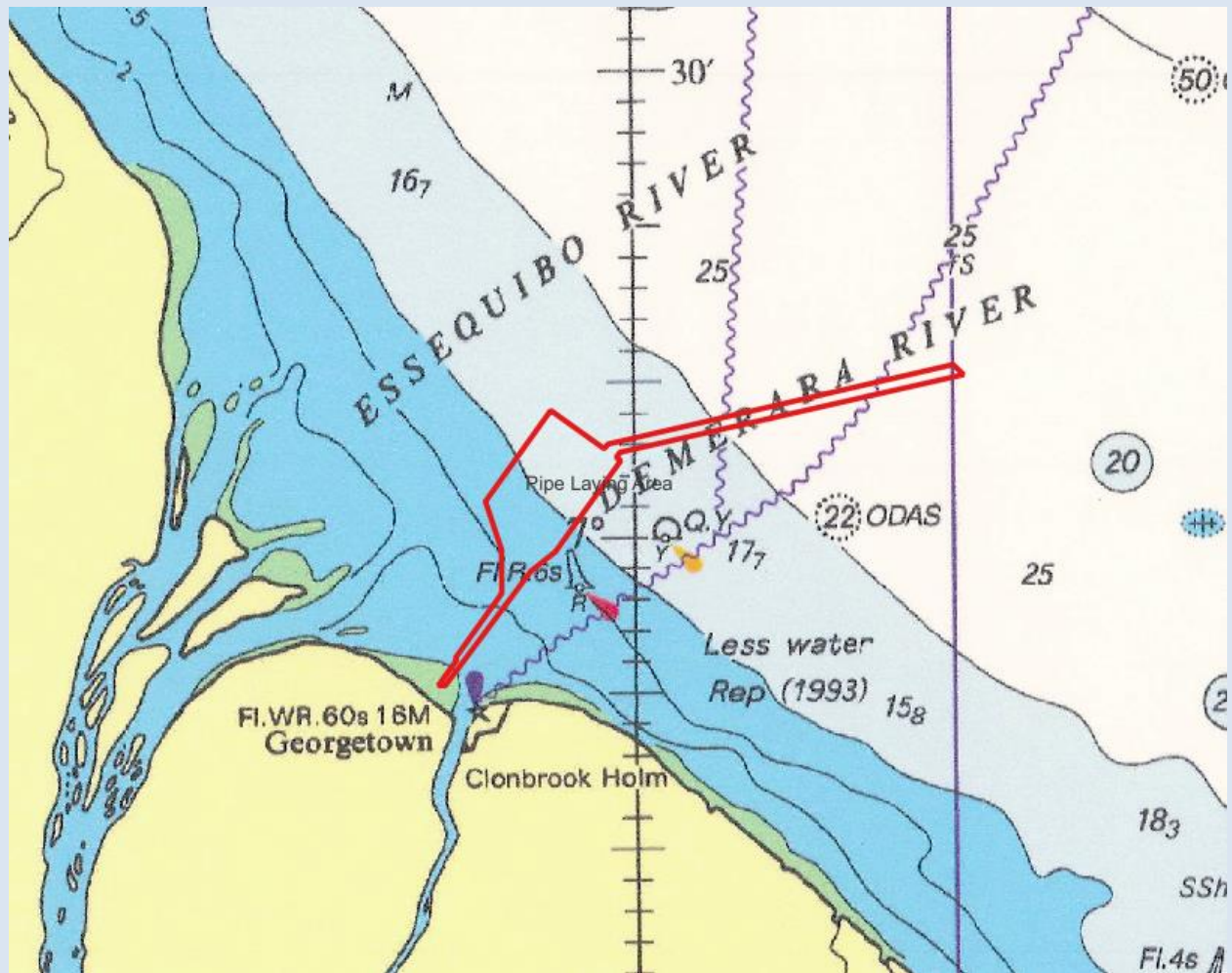
Exclusion zone/ Storage Area			
No	Latitude (N)	Longitude (W)	Remarks
1	07° 06'.921	058° 05'.543	WGS 84 (Zone 21)
2	07°03'.746	058°01'.107	WGS 84 (Zone 21)
3	06°48'.970	058°11'.773	WGS 84 (Zone 21)
4	06°49'.920	058°13'.0100	WGS 84 (Zone 21)
5	06° 56'.116	058° 08'.627	WGS 84 (Zone 21)
6	06°51'.690	058°09 '.818	WGS 84 (Zone 21)
7	06°51'.646	058°09'.849	WGS 84 (Zone 21)
8	06°59'.594	058°11'.173	WGS 84 (Zone 21)

Two transits corridors have been excluded from the area for vessels transiting between the Essequibo River and Demerara River Mouths; these areas will be marked with lateral buoys, bounded by the following coordinates:

Northern Transiting Corridor Area			
No	Latitude (N)	Longitude (W)	Remarks
1	06° 59'.200	058° 09'.192	WGS 84 (Zone 21)
2	06°56'.968	058°06'.001	WGS 84 (Zone 21)
3	06°56'.924	058°06'.032	WGS 84 (Zone 21)
4	06°59'.102	058°09'.084	WGS 84 (Zone 21)
Southern Transiting Corridor Area			
1	06° 52'.639	058° 11'.142	WGS 84 (Zone 21)
2	06°51'.690	058°06 '.001	WGS 84 (Zone 21)
3	06°51'.646	058°06'.032	WGS 84 (Zone 21)
4	06°52'.549	058°11'.174	WGS 84 (Zone 21)



Inset of Chart BA 527 showing Exclusion Zone inclusive of transit corridors area



Inset of Chart BA 517 showing areas of operation

All mariners are required to stay clear of these vessels and navigate with extreme caution when in the vicinity.

Inset position is included for further guidance.

Communication can be made with these vessels or the Georgetown Lighthouse, on VHF Ch. 16.

G Archer
Harbour Master (Ag)
For Director General

June 12, 2023