

MINISTRY OF PUBLIC WORKS

MARITIME ADMINISTRATION DEPARTMENT

NOTICE TO MARINERS

No. 093 (2023) Guyana

OFFSHORE GUYANA

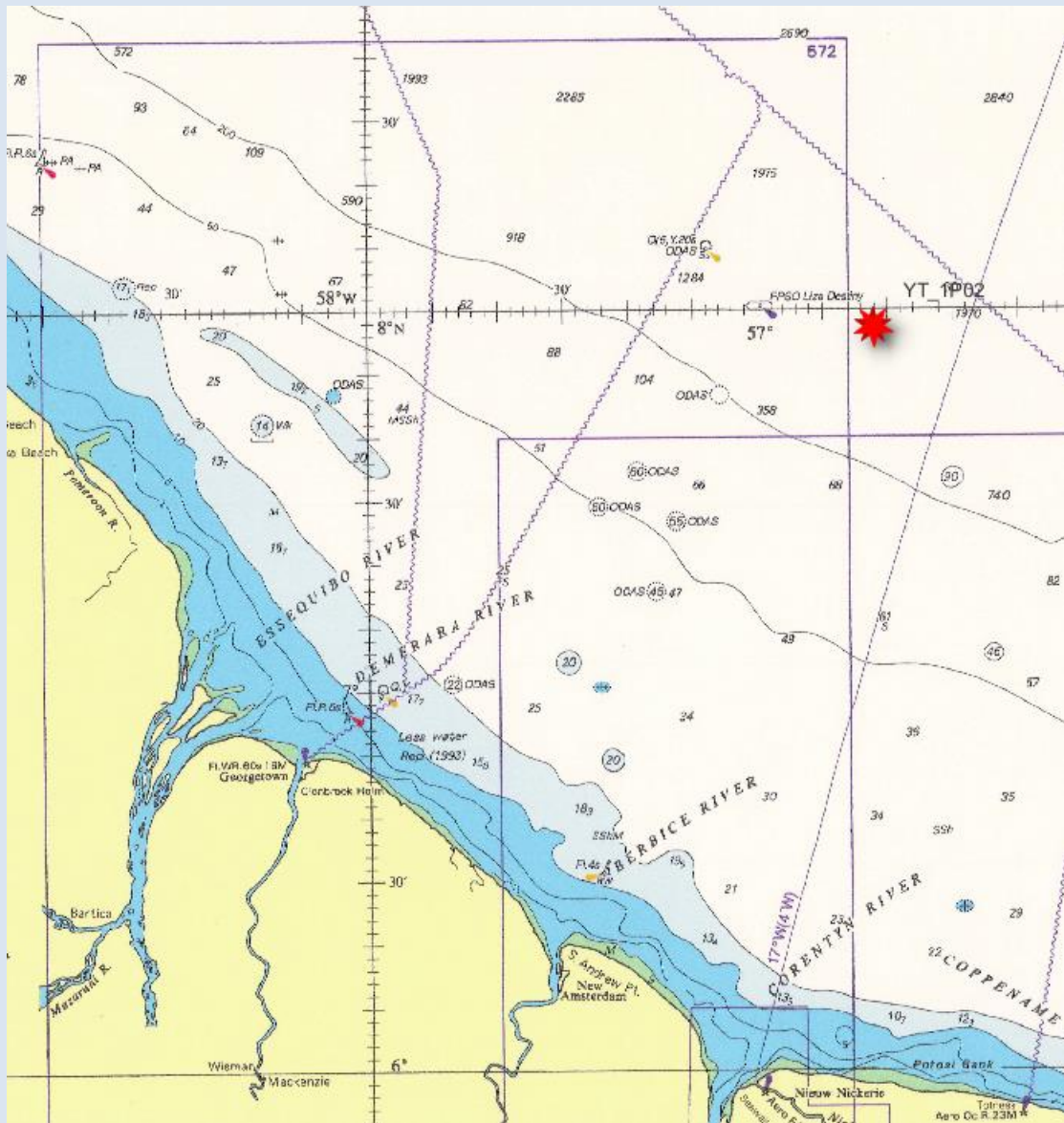
On *June 14, 2023*, *Esso Exploration & Production Guyana Ltd (EEPGL)* will continue developmental drilling operations at **YT_1P02 Well Site** within the **Stabroek Block** of Guyana's Exclusive Economic Zone.

MODU Noble Bob Douglas will be engaged in drilling activities which will conclude on **June 30, 2023** and will incorporate the use of the undermentioned vessels that would display the international signal for vessels engaged in such activities:

- * Gary Rook
- * Russell Bouziga
- * Robert Adams
- * Seacor Congo
- * Sanibel Island
- * Jack Edwards
- * Seacor Murray
- * C- Installer
- * Seacor Mixteca
- * Roger White
- * Charlie Comeaux
- * Ted Smith
- * C-Confidence
- * Gerard Tide
- * Havila Phoenix
- * Paradise Island
- * Seacor Demerara
- * Clarence Triche
- * Skandi Skansen
- * Horn Island
- * Russell Adams
- * Seacor Tarahumara
- * Seacor Amazon
- * Maersk Nomad
- * Emily Day Mc Call
- * Michael Crombie McCall
- * Guyana Hero
- * Jackie Chouest
- * C-Legend
- *Wine Island

The well site is situated approximately 103.1 nautical miles (190.9 kilometers) off the Coast of Guyana and covers an area of 0.29 square nautical miles (1 square kilometer); bounded by the following coordinates:

YT_1P02 Well Site			
No	Latitude (N)	Longitude (W)	Remarks
1	07° 56'.064	056° 42'.701	WGS 84 (Zone 21)
2	07° 56'.064	056° 42'.157	WGS 84 (Zone 21)
3	07° 55'.520	056° 42'.157	WGS 84 (Zone 21)
4	07° 55'.520	056° 42'.701	WGS 84 (Zone 21)



Inset of Chart BA 517 showing areas of operation

All mariners are required to stay clear of these vessels and navigate with extreme caution when in the vicinity.

Inset position is included for further guidance.

This notice supersedes information provided in **Nav Warning 75 of 2023**.

Communication can be made with these vessels or the Georgetown Lighthouse, on VHF Ch. 16.

G Archer
Harbour Master (Ag)
 For Director General

June 12, 2023