

MINISTRY OF PUBLIC WORKS

MARITIME ADMINISTRATION DEPARTMENT

NOTICE TO MARINERS

No. 54 (2023) Guyana

ESSEQUIBO AND MAZARUNI RIVERS

The *Maritime Administration Department (MARAD)* hereby notifies all vessels operating in the Essequibo River in the vicinity of Bartica; and the Mazaruni River, that fifteen (15) concrete beacons were constructed on dangerous rocks that were partially submerged at High Water in these rivers.

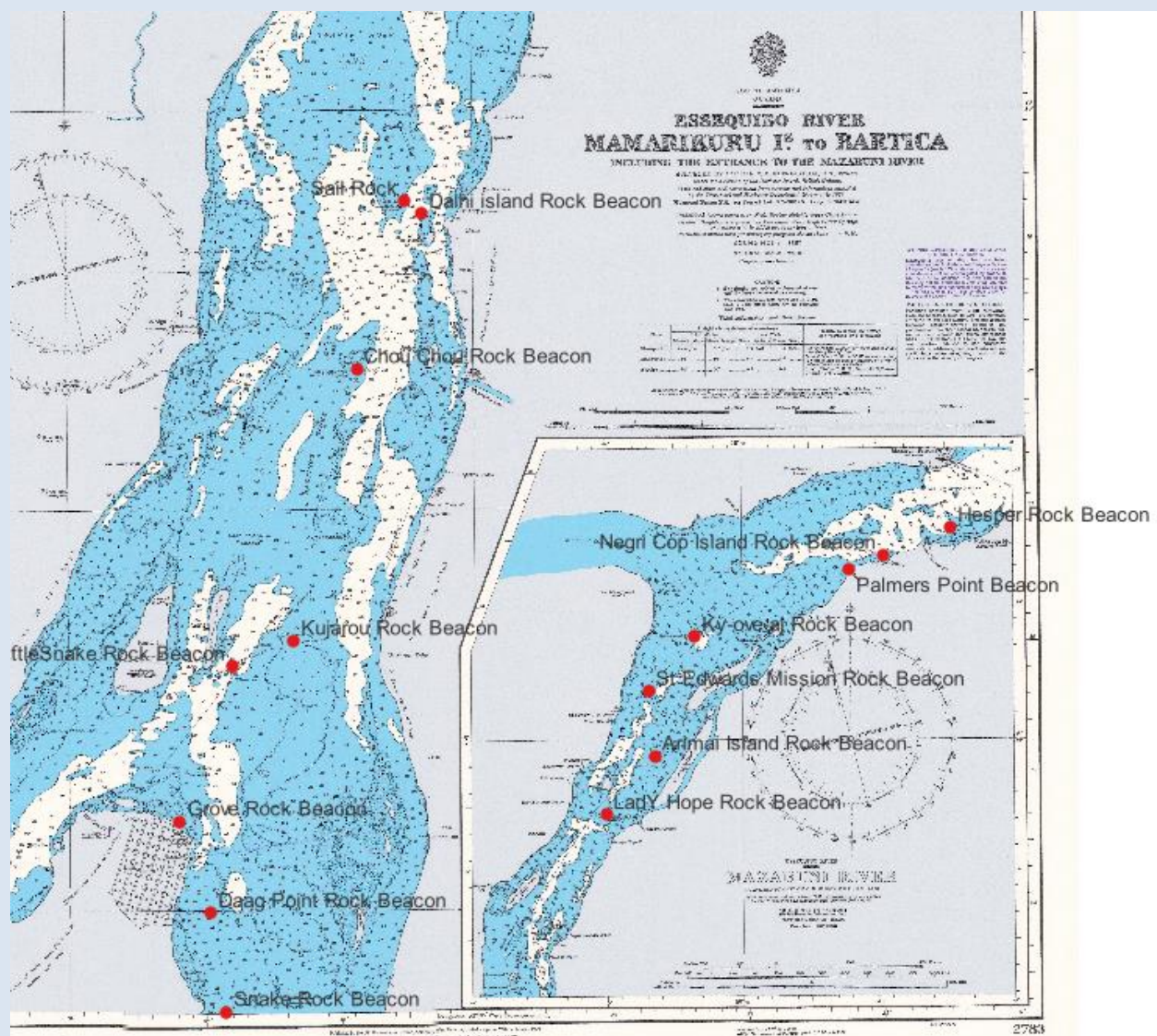
The location and characteristics of these beacons are as follows:

No.	NAME LOCATION	POSITION Latitude N Longitude W	CHARACTER & PERIOD	H.T ABOVE H.W.M (metres)	VIS IN MLS	STRUCTURE	REMARKS
B	ESSEQUIBO						
01.	Sail Rock	06 29.196 058 35.468	FI R Q	5.5	4	Red Concrete Pillar Beacon	Established
02.	Dalhi Island Rock	06 29.070 058 35.323	FI G Q	1.2	4	Green Concrete Pillar Beacon	Established
03.	Chou Chou Rock	06 27.939 058 35.880	FI W Q	2.6	4	Black with Red Horizontal Band Concrete Pillar Beacon	Established
04.	Kujarou Rock	06 25.932 058 36.284	FI W Q	3.1	4	Black with Red Horizontal Band Concrete Pillar Beacon	Established
05.	Rattlesnake Rock	06 25.746 058 36.756	FI W Q	1.0	4	Black with Red Horizontal Band Concrete Pillar Beacon	Established
06.	Grove Beacon (3 rd Ave Pavilion Rock)	06 24.599 058 37.136	FI (2) Y 6 sec	2.0	4	Black with Red Horizontal Band Concrete Pillar Beacon	Established
07.	Daag Point Beacon (9 th Street Rock)	06 24.028 058 37.092	FI W Q	1.0	4	Black with Red Horizontal Band Concrete Pillar Beacon	Established
08.	Snake Rock	06 22.944 058 36.695	FI (2) W 6 sec	3.1	4	Black with Red Horizontal Band Concrete Pillar Beacon	Established

Positions refers to WGS 84 Datum

No.	NAME LOCATION	POSITION Latitude N Longitude W °		CHARACTER & PERIOD		H.T ABOVE H.W.M (metres)	VIS IN MLS	STRUCTURE	REMARKS
B	MAZARUNI								
01.	Hesper Rock	06 058	23.493 39.388	FI Q	W	2.4	4	Black with Red Horizontal Band Concrete Pillar Beacon	Established
02.	Negri Cop Islands Rock	06 058	23.285 39.920	FI Q	G	4.2	4	Black with Red Horizontal Band Concrete Pillar Beacon	Established
03.	Palmers Point	06 058	23.187 40.178	FI Q	Y	4.5	4	White Concrete Pillar Beacon	Established
04.	Ky-ove-al Rock	06 058	22.669 41.307	FI Q	R	1.5	4	Black with Red Horizontal Band Concrete Pillar Beacon	Established
05.	St. Edwards Mission Rock	06 058	22.242 41.623	FI Q	W	1.0	4	Black with Red Horizontal Band Concrete Pillar Beacon	Established
06.	Arimai Island Rock	06 058	21.794 41.581	FI Q	W	2.2	4	Black with Red Horizontal Band Concrete Pillar Beacon	Established
07.	Lady Hope Rock	06 058	21.368 41.954	FI Q	W	2.3	4	Black with Red Horizontal Band Concrete Pillar Beacon	Established

Positions refers to WGS 84 Datum



INSET OF CHART BA 2783

Communication can be made to the Georgetown Lighthouse on VHF Ch.16.

This notice supersedes information provided in **page 39** of the **2023 Tide Tables and List of Lights**

G Archer
Harbour Master (Ag)

April 06, 2023