

MINISTRY OF PUBLIC WORKS

MARITIME ADMINISTRATION DEPARTMENT

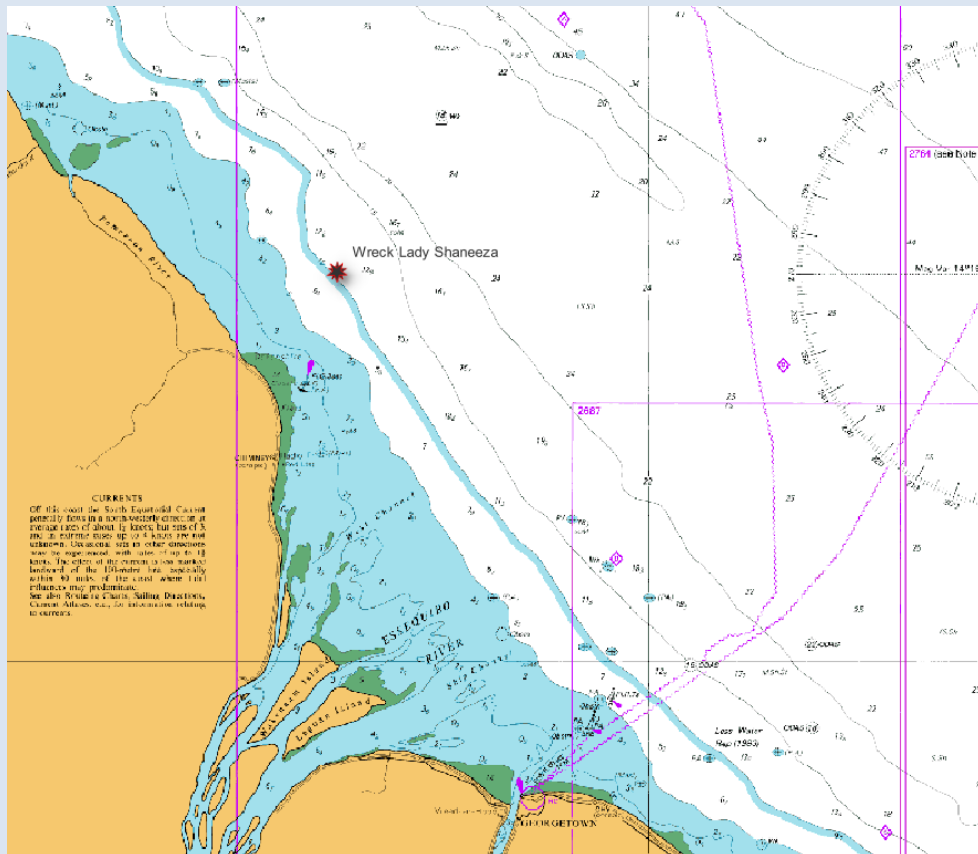
NOTICE TO MARINERS

No. 180 (2022) Guyana

ESSEQUIBO COAST

A General Cargo Vessel “**Lady Shaneeza**” sunk approximately ten (10) nautical miles off the Coast of the Essequibo River within the vicinity of Devonshire Castle; in a charted depth of 12.2 meters (as shown on BA Chart 572). Approximate position:

Latitude (N)	Longitude (W)	Remarks
07° 30'.300	058° 24'.300	WGS 84 Datum



Inset of BA 519 Chart

The wreck lies approximately 15.2 nautical miles with bearing 19° T from the Charted (Conspicuous) Chimney on the Essequibo Coast.

The wreck is fully submerged at Low Spring Tides.

Mariners are therefore warned to keep clear of this wreck and navigate with caution in this area.

Communication can be made with Georgetown Lighthouse on VHF Ch. 16.

G Archer
Harbour Master (Ag)
For Director General

December 30, 2022