

MINISTRY OF PUBLIC WORKS

MARITIME ADMINISTRATION DEPARTMENT

NOTICE TO MARINERS

No. 138 (2022) Guyana

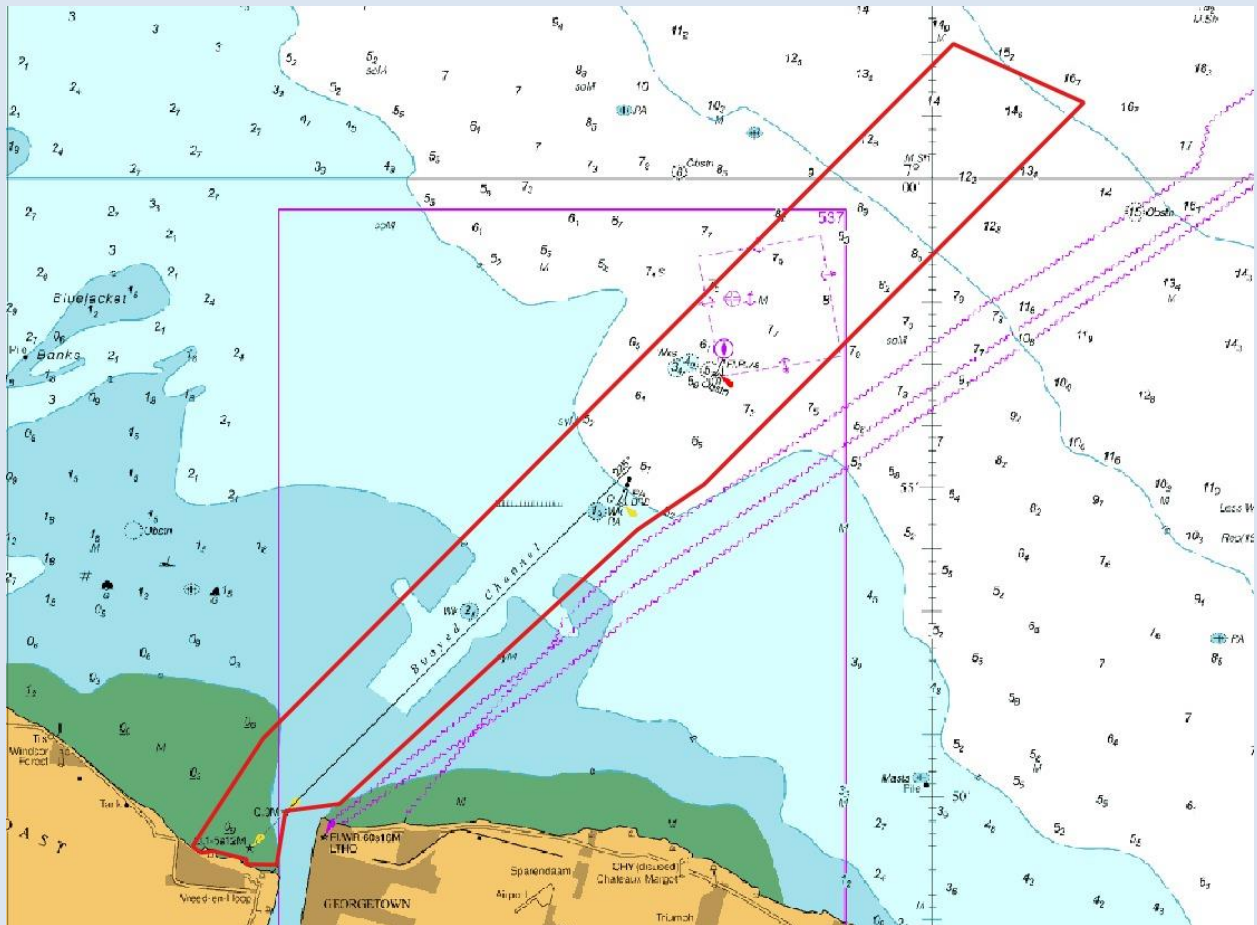
OFFSHORE GUYANA

The Maritime Administration Department (MARAD) wishes to advise that Dredging Activities will be conducted in the vicinity of the Demerara Main Ship Channel and off the West Coast of Demerara in the vicinity of **Plantation Best**.

This exercise is schedule to conclude on **December 31, 2022**, and will incorporate the use of **Tug DN87** and **Deck Cargo Barge K4512** which would display the international signal for vessels engaged in such activities:

The dredging area covers an area of 34.74 square nautical miles (119.2 square kilometer); bounded by the following coordinates:

No	Latitude (N)	Longitude (W)	Remarks
1	06° 49'.170	058° 12'.003	WGS 84 (Zone 21)
2	06° 50'.921	058° 10'.851	WGS 84 (Zone 21)
3	06° 58'.101	058° 03'.700	WGS 84 (Zone 21)
4	07° 02'.177	057° 59'.640	WGS 84 (Zone 21)
5	07° 01'.228	057° 57'.519	WGS 84 (Zone 21)
6	06° 55'.039	058° 03'.687	WGS 84 (Zone 21)
7	06° 54'.304	058° 04'.773	WGS 84 (Zone 21)
8	06° 49'.856	058° 09'.611	WGS 84 (Zone 21)
9	06° 49'.745	058° 10'.488	WGS 84 (Zone 21)
10	06° 48'.872	058° 10'.632	WGS 84 (Zone 21)
11	06° 48'.880	058° 11'.123	WGS 84 (Zone 21)
12	06° 48'.965	058° 11'.123	WGS 84 (Zone 21)
13	06° 49'.094	058° 11'.662	WGS 84 (Zone 21)
14	06° 49'.067	058° 11'.858	WGS 84 (Zone 21)



Insert of Chart BA 527 showing area of operation

All mariners are required to stay clear of this vessel and navigate with extreme caution when in the vicinity.

Inset area is included for further guidance

Communication can be made to this vessel or the Georgetown Lighthouse, on VHF Ch. 16.

G Archer
Harbour Master (Ag)
 For Director General

August 11, 2022