

**MINISTRY OF PUBLIC WORKS**  
**MARITIME ADMINISTRATION DEPARTMENT**  
**NOTICE TO MARINERS**

No. 126 (2022) Guyana

**OFF SHORE GUYANA**

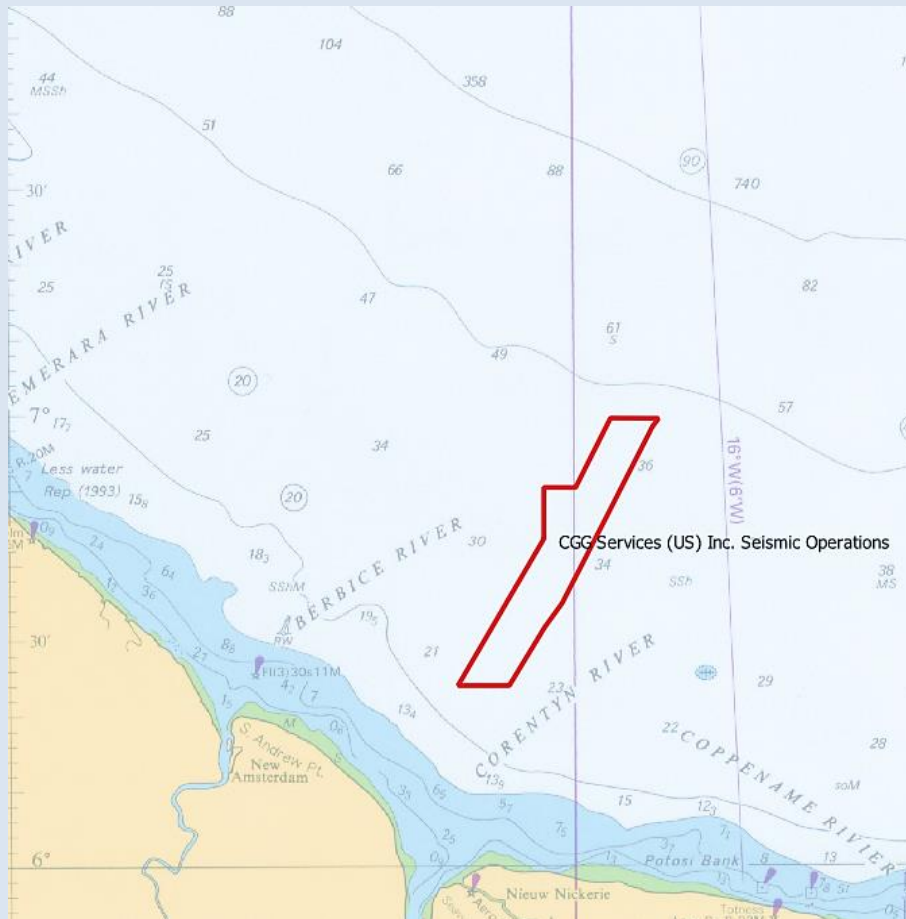
**CGG Services (US) Inc.** will continue 3-D Seismic operations beyond Guyana's Eastern Offshore Maritime boundary, with occasional ingress into the **Corentyne Block** of the Guyana's Exclusive Economic Zone.

This exercise is scheduled to conclude on **August 31, 2022**, and will incorporate the use of the undermentioned vessels, which will display the international signal for vessels engaged in such activities:

- **SV BCP Prospector**
- **MV Geo Service 1**
- **MV National Energy Explorer**

The ingress area is situated approximately 18 nautical miles (33.3 kilometers) from the Coast of Guyana, and covers an area of 246.3 square nautical miles (844.8 square kilometers), bounded by the following coordinates:

No.	Latitude (N)	Longitude (W)	Remarks
1	07° 00'.007	056° 40'.295	WGS84 (Zone 21)
2	06° 59'.982	056° 34'.178	WGS84 (Zone 21)
3	06° 58'.901	056° 34'.755	WGS84 (Zone 21)
4	06° 46'.789	056° 40'.931	WGS84 (Zone 21)
5	06° 35'.625	056° 46'.666	WGS84 (Zone 21)
6	06° 32'.417	056° 48'.993	WGS84 (Zone 21)
7	06° 24'.754	056° 53'.645	WGS84 (Zone 21)
8	06° 24'.754	057° 00'.416	WGS84 (Zone 21)
9	06° 44'.084	056° 49'.097	WGS84 (Zone 21)
10	06° 50'.862	056° 49'.096	WGS84 (Zone 21)
11	06° 50'.854	056° 44'.904	WGS84 (Zone 21)



*Inset of Chart BA 517 showing areas of operation*

All mariners are required to maintain a wide berth of these vessels, and navigate with caution when in the vicinity.

Please be advised that SV BCP Prospector will be towing 8000m (Length) by 1100m (Width) of streamer cables.

Inset position is included for further guidance.

Communication can be made to these vessels, or the Georgetown Lighthouse, on VHF Ch. 16.

G Archer  
**Harbour Master (Ag)**  
**For Director General**

**July 13, 2022**